

HIGHFILL



Then and Now

(1860 to 2004)

**A presentation by
Cassie Elliott**

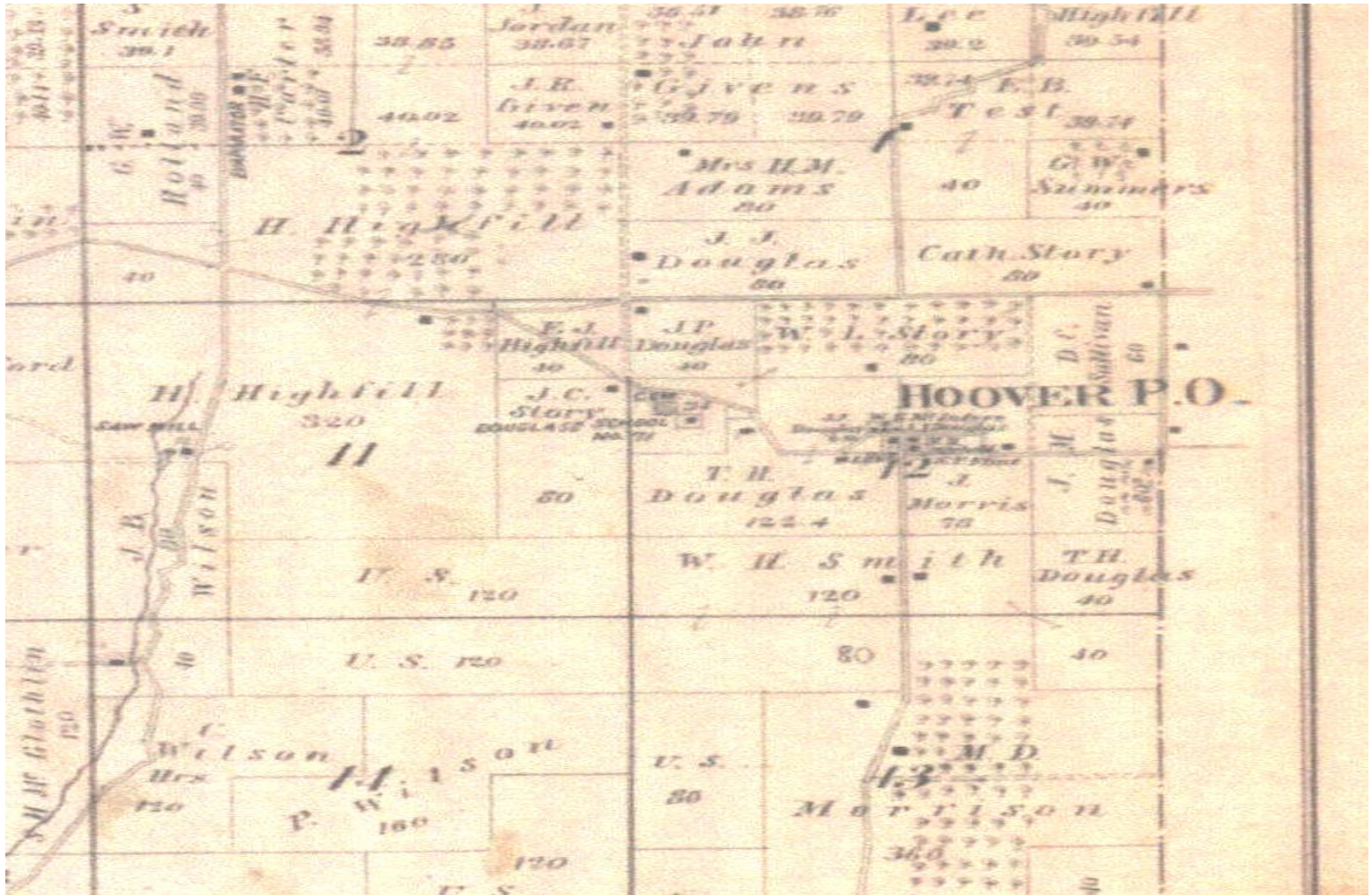
Information regarding this presentation -

- Original PowerPoint presentation was compiled for the Benton County Historical Society meeting held on September 8, 2002
- Presentation has been updated, expanded and published for use of the Community Library Association of Highfill for a fundraiser to create a public library in Highfill
- We apologize for errors and omissions to this publication. Its contents are the result of lots of research, information given to me and personal collections.
- © Cassie Elliott, August 2004

Then

1860-1957

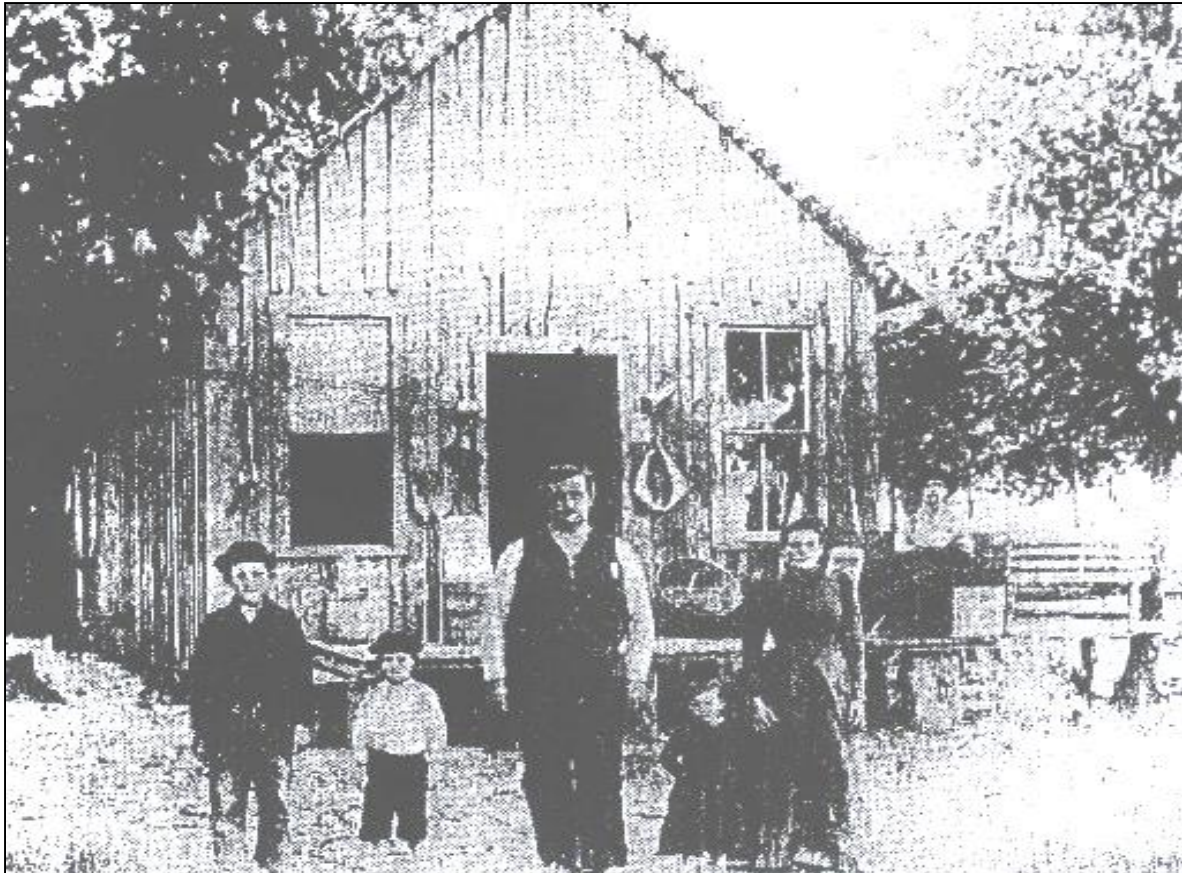
Highfill Area, 1903 Benton County Atlas



Hoover

- Located approximately 1 mile southeast of what is now downtown Highfill
- 1871 Highfill Cemetery located at Hoover, founded by S. Story & H. Highfill
- 1877 School deeded by S. Story
- May 5, 1887-December 31, 1905 Post Office opens
- Hoover contained a post office, school, general store, apple evaporator and blacksmith
- Railroad comes. Businesses moved soon thereafter to Highfill

Hoover Store & Post Office owned by Sandy Flynt



Douglas School



Hoover School - 1903

Some of the same teachers pictured as in previous page of Douglas School (known as both)

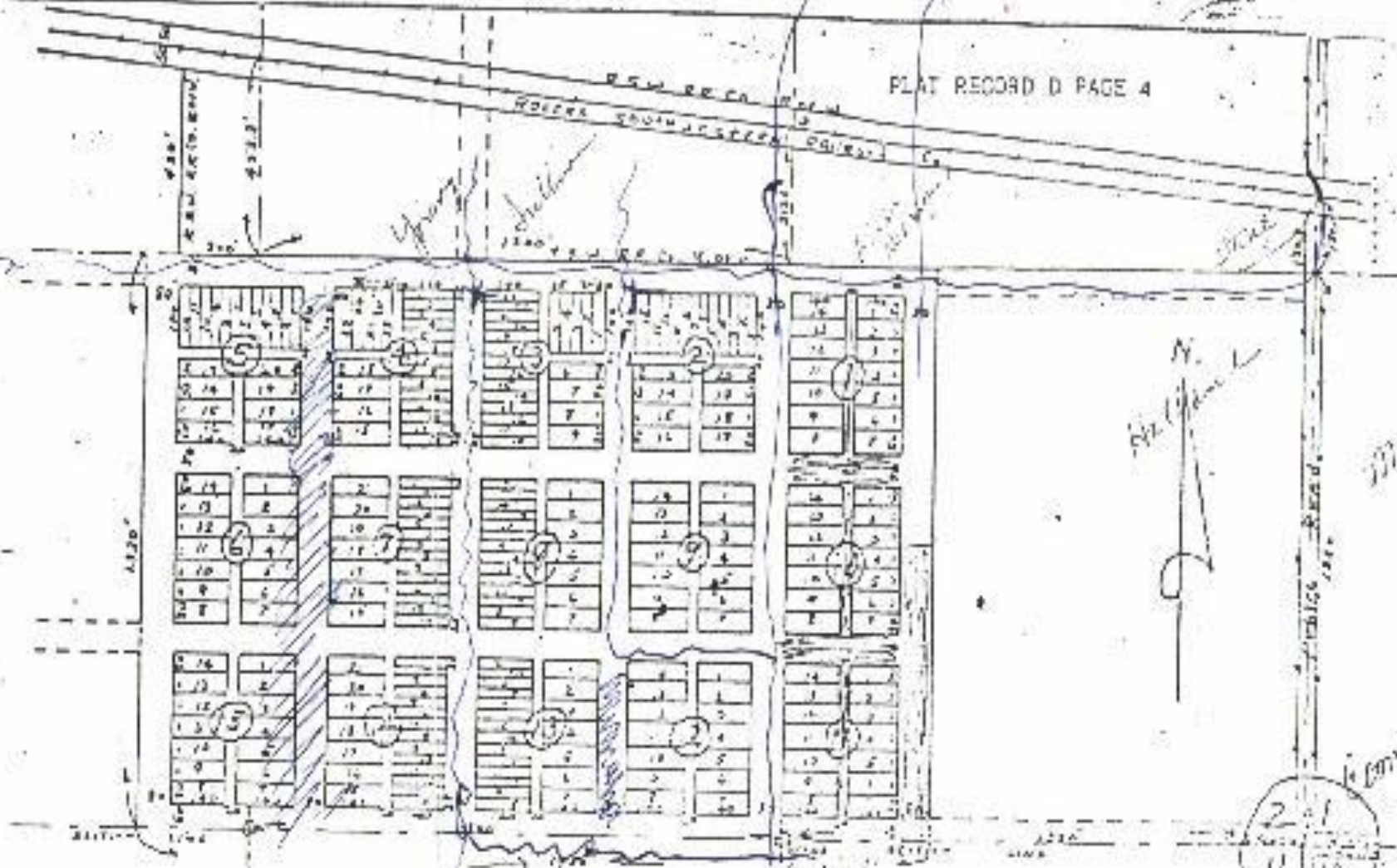


Highfill - The Town

- 1903 Hezekiah Highfill owned 1,000 acres, mostly apple orchards
- 1906 Town Plat / Railroad
- 1907 (April 27) Post Office opened by Josh Mason (from Mason Valley)
- 1908-10 Churches build on donated lots
- 1911 School (now Community Building) deeded by J.J. Douglas
- Businesses prosper in new Highfill area

Hezekiah Highfill, founder of the town, was born May 2, 1834. He served in the confederate army under General Price. He married M.S. Mitchell

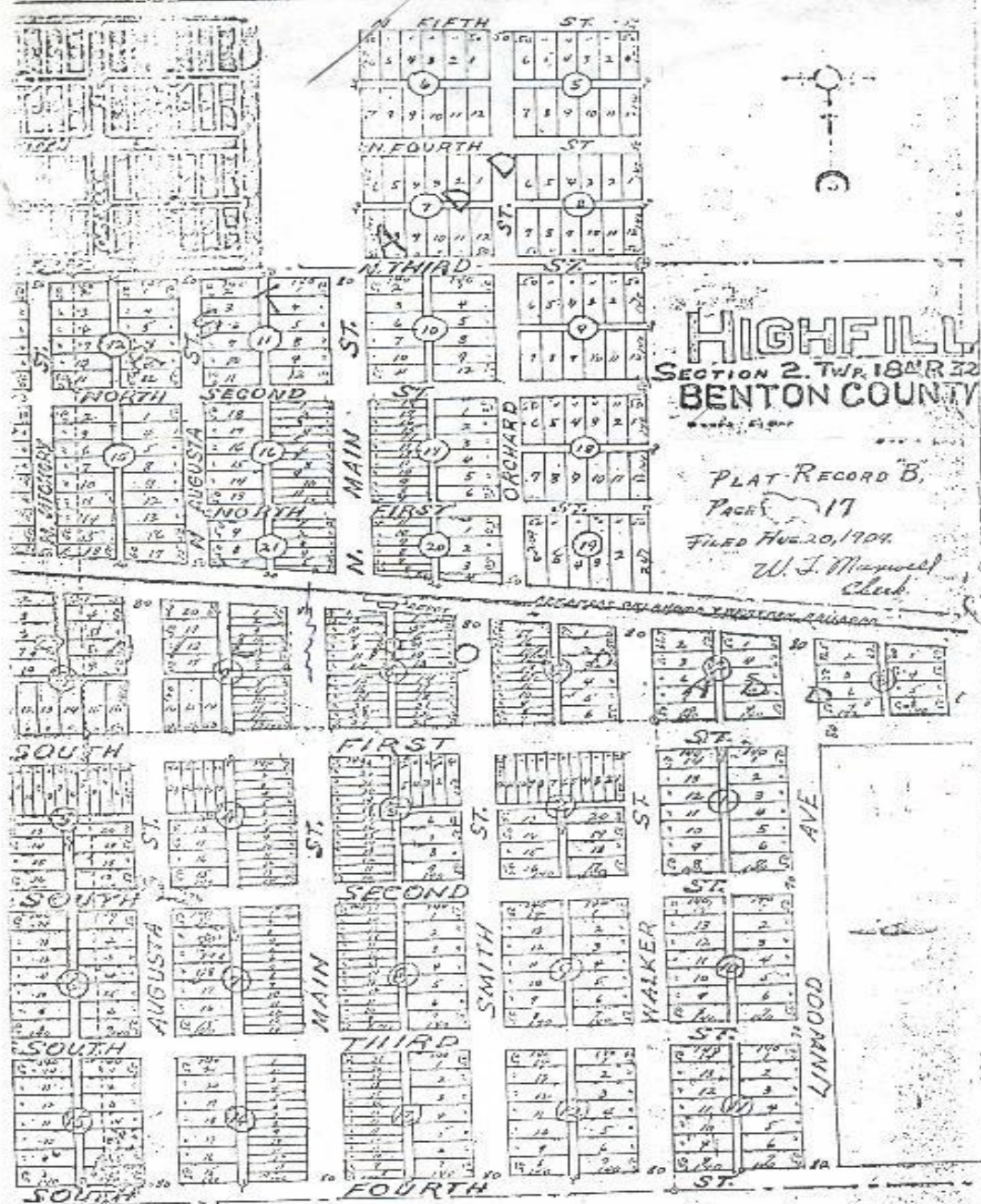




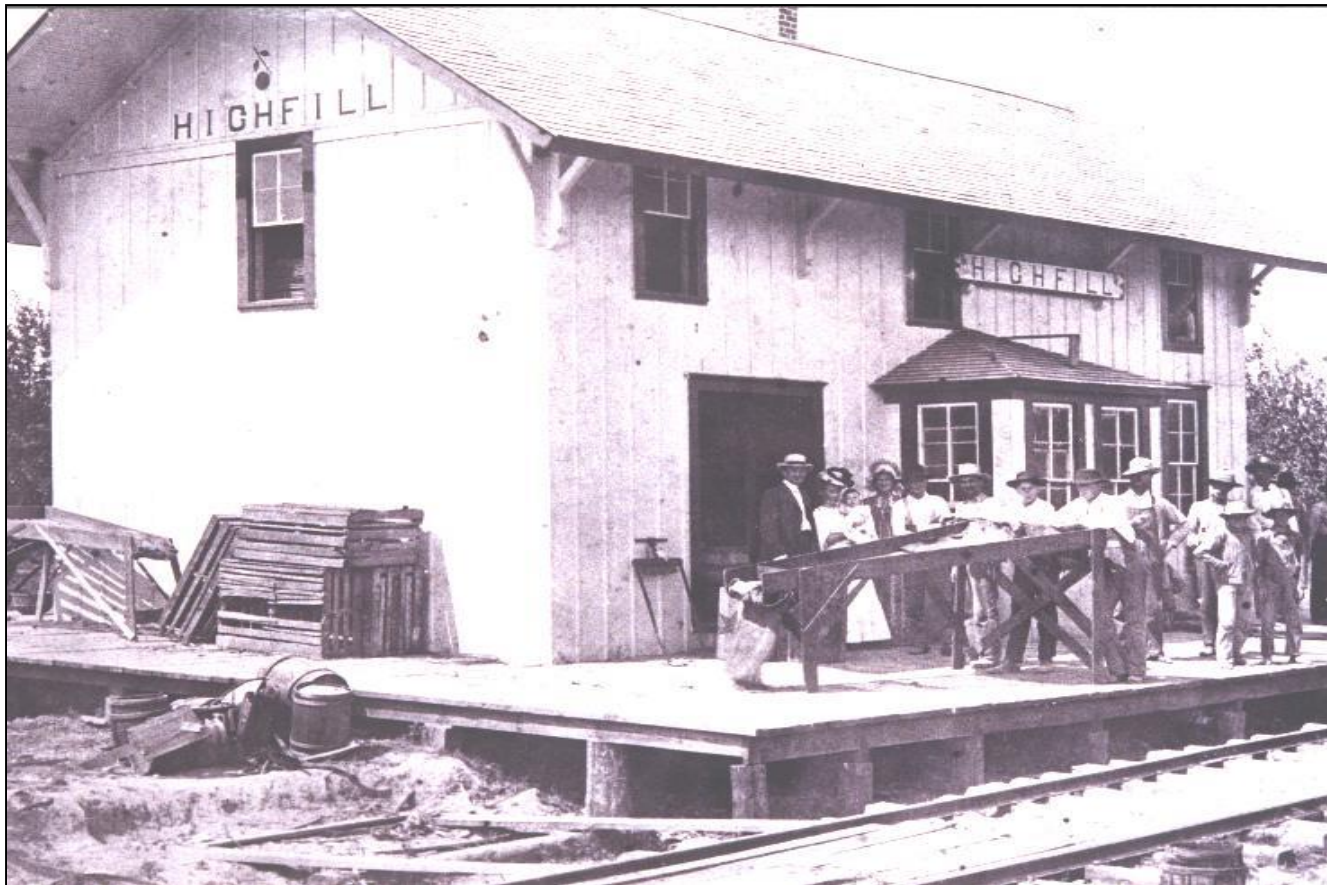
PLAT OF HIGHWAY
 SITUATE IN SECTION 2 TOWNSHIP 10 NORTH, RANGE 31 W. BENTON COUNTY, ARK.
 Surveyed March 1906 Edwin B. Whitcomb, Engr. Del.

TOWNSITE 60 ACRES:
 A Pt. of the SE $\frac{1}{4}$ SE $\frac{1}{4}$ Sec. 2 & All SW $\frac{1}{4}$ SE $\frac{1}{4}$ Sec. 2 & a Part of the SE $\frac{1}{4}$ SW $\frac{1}{4}$ Sec. 2
 E. B. Whitcomb, Engr. of R. S. W. R. P. Co.

FILED FOR RECORD March 30, 1906, F. P. Galbreath, Circuit Clerk.



Highfill Depot, circa 1906



Early Highfill Businesses

Summers' Saw Mill

Mason's Hardware

Child's Groceries

Dr. Thurman

Dr. Chambers

Holland's Livery

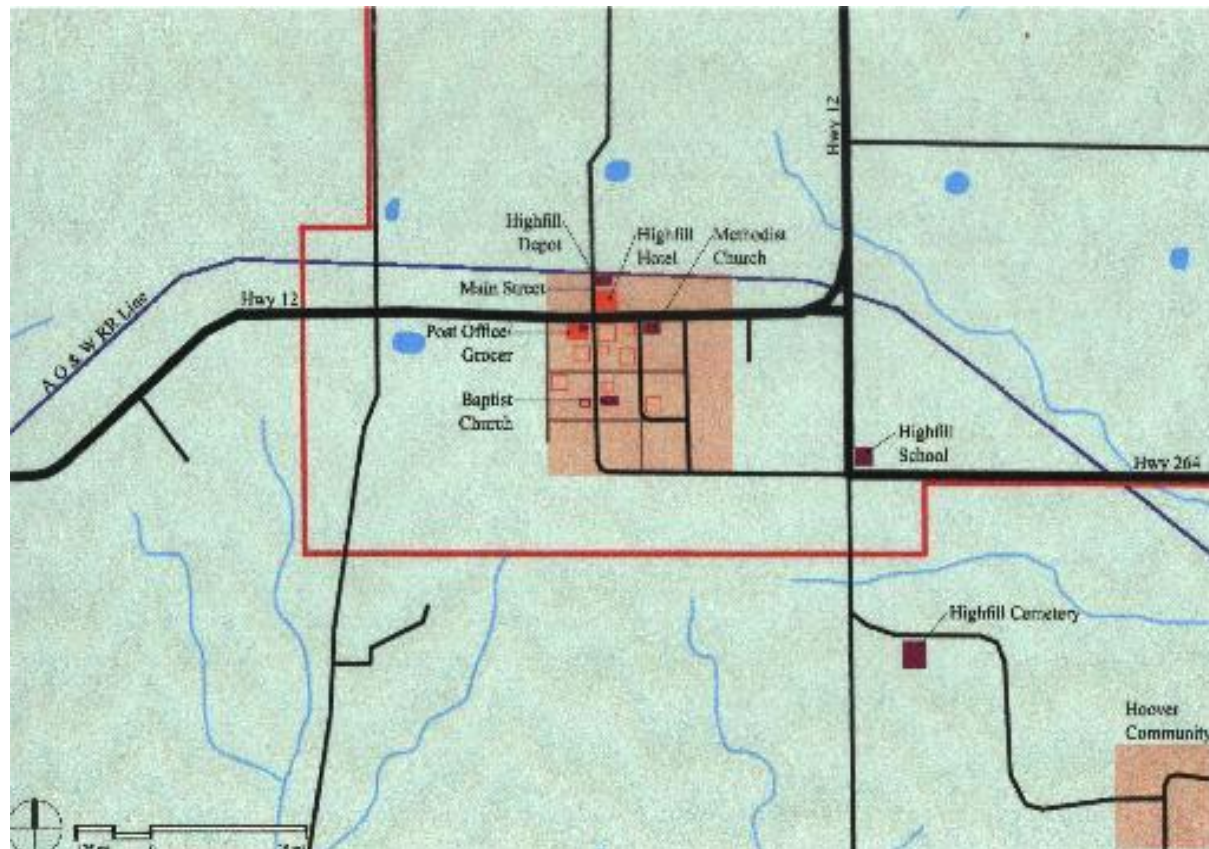
Blacksmith

Fruit Evaporators

Hotel

Historic Highfill

Reconstructed by the University of Arkansas
Community Design Center - 2001



Highfill Methodist Church
Built 1908, burned 1970
Original church built at Hoover in 1865



Original Highfill First Baptist Church
Built 1910, demolished in 1949



George Summers' portable sawmill provided lumber for construction of the First Baptist Church



George Summer's "Portable" Sawmill, circa 1900, Highfill, Arkansas

Highfill Hotel, location now known as NE corner of N Main Street & Hwy 12



Highfill Girls Basketball Team ca.1915



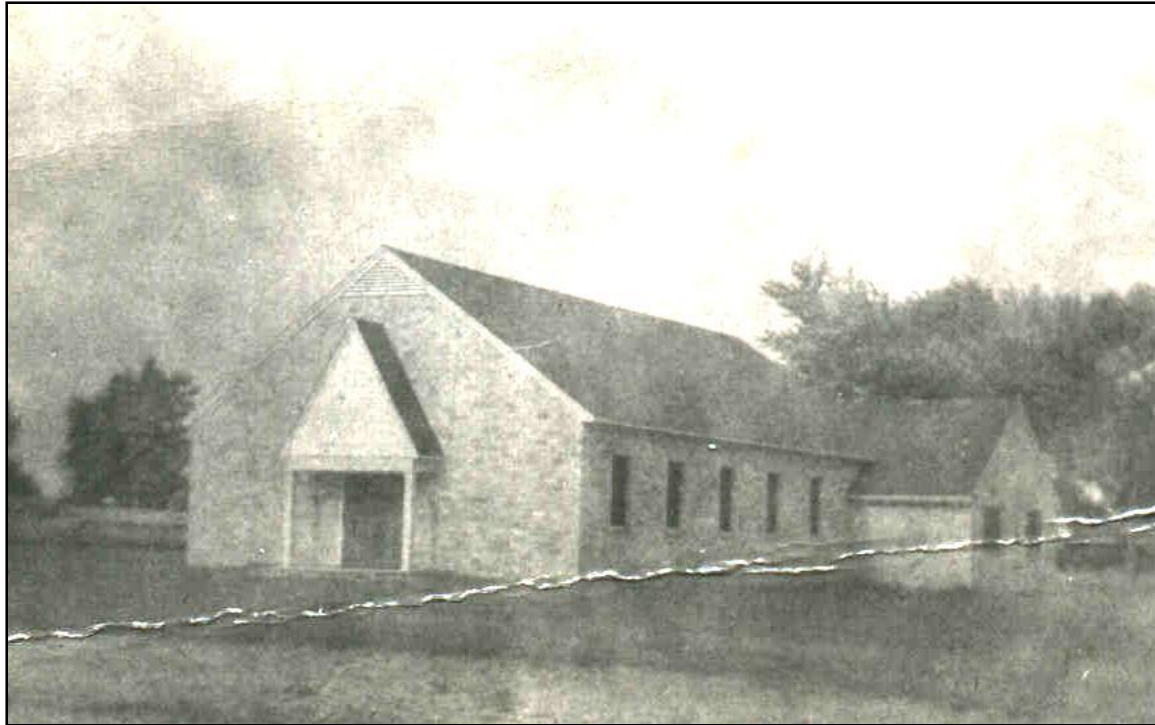
Decline Begins

- 1918 Railroad pulls out
Apple industry holds
Hezekiah Highfill dies (July 26)
Church & community affairs continue
Businesses dwindle
- 1943 Post Office closes (May 27)
- 1948 School closes. Consolidation with Gentry (SD #19)
- 1949 Baptist Church demolished & rebuilt

1929 Highfill 4-H Club at the Community Building



First Baptist Church - 1950



Now

1958-2004

Incorporation and Growth

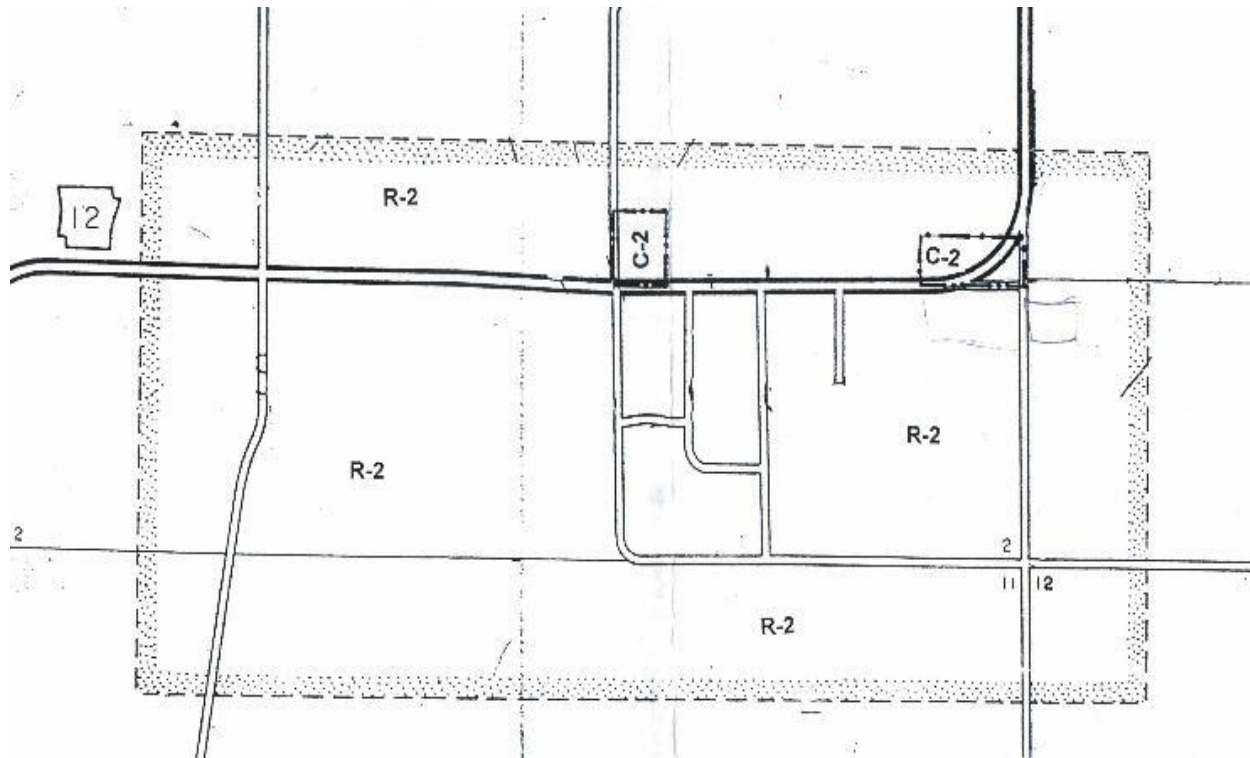
- 1958 Highfill incorporates to take advantage of gas line
- 1970 Highfill Methodist Church burns & is rebuilt
- 1979 Fire Department established
- 1995 First Annexation, planning commission created, first sales tax enacted
- 1998 Northwest Arkansas Regional Airport opens (XNA – now Northwest Arkansas National Airport)
- 2001 Town acquires land for first city park
- 2002 Water project completed and city water is available to residents as of December

Old Highfill Fire Station

Built 1979, demolished 2003



A portion of the 1996 zoning map covering the downtown area



Aerial photo from 2003 downtown area



Northwest Arkansas Regional Airport –XNA
(now Northwest Arkansas National Airport),
opened August 10, 1998



Highfill's New Fire Station Built 1999



Highfill receives \$50,000 for new rescue truck, arrived October 2003.



Present-Day Highfill Methodist Church rebuilt 1970 with cornerstone from original church of 1865



Highfill Baptist Church prior to most recent remodel



Present-day Mason Valley Baptist Church which celebrated its 125th anniversary in 2004



Home of Richard Harbison, and one of the oldest homes in the community.
Restoration work was done in 2002. Home was demolished in 2021.



Highfill City Park
Playground area land purchased 2001. Park
was built in 2001-02.



Walking trail at Highfill City Park - Built 2001-02

Highfill 4-H Club planted trees on Park Day, April 26, 2003



Bryant Home
Located south of Highfill
Built in 1860's



House known as the “Webb House” at the corner of S. Main & 4th Streets.
Was restored for a library



Community Building

New siding and windows in the late 1990's and central heat and air in 2000.



Infrastructure - Several road improvements were completed in Highfill from 2000-2004



Highfill's Community Christmas

This event was held every year by the Willing Workers and the Extension Homemakers.



Pictures from 2002

Highfill Hay Daze

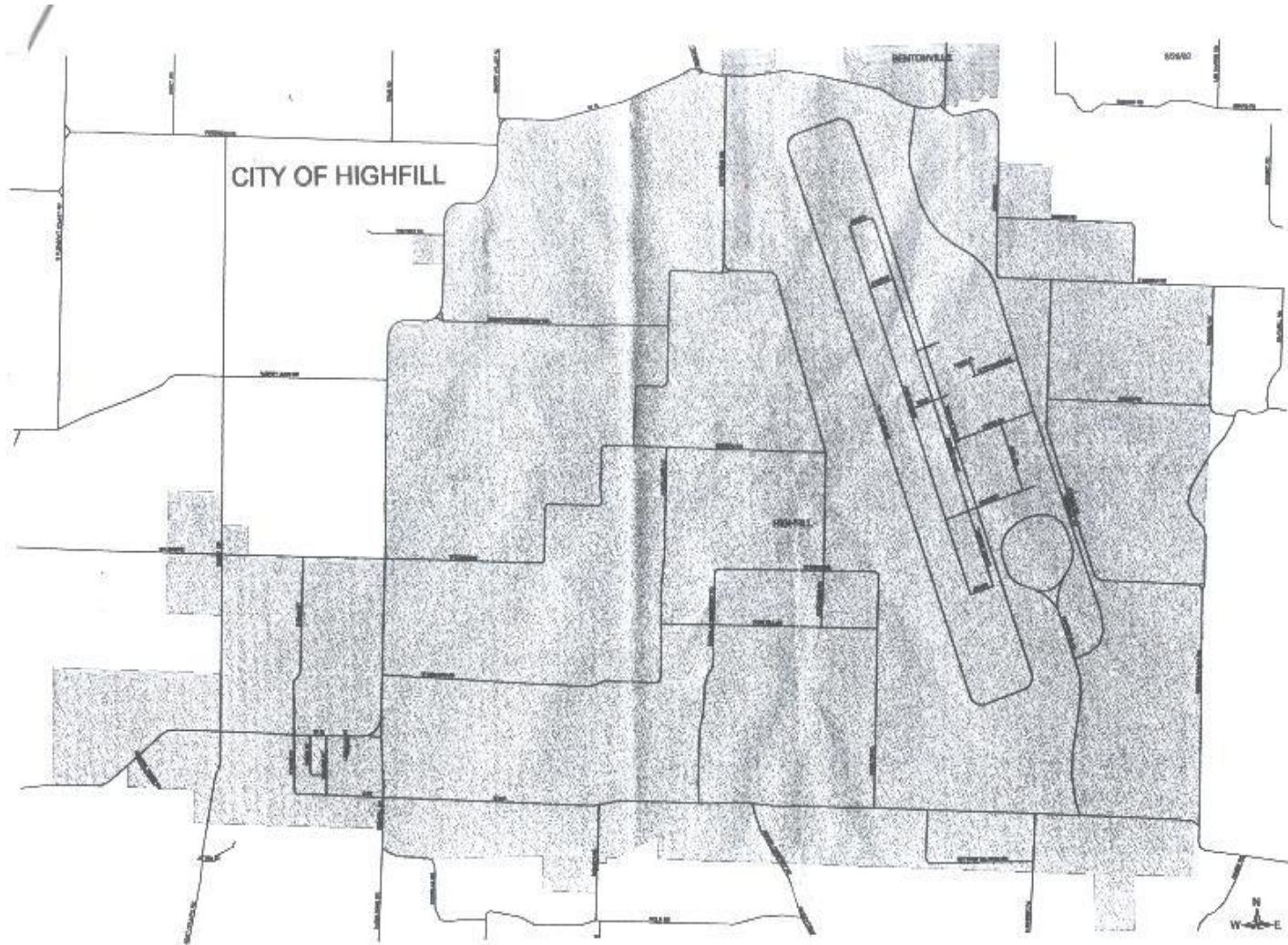
The yearly “fair” was renamed and brought back to life. Event was complete with beauty pageants, singing, parade and entertainment for both young and old.



Population per 2000 U.S. Census



Highfill City Limits, 2002



Highfill received water from Two-Ton through Benton County RDA

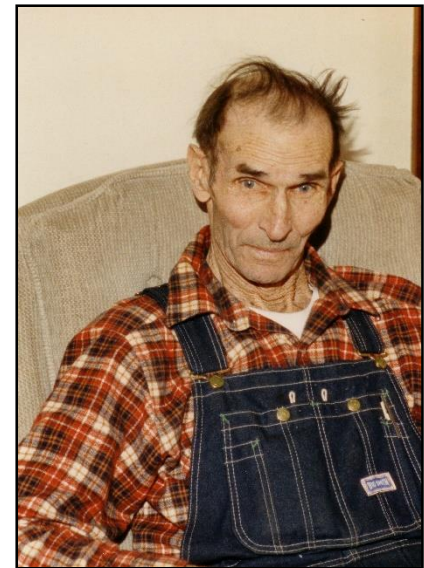
- First customer-David Hankins, December 2002
- Photos include: Mayor Scott Elliott, Engineering Services, Inc. engineer Jerry Martin, Water Operator David Fletcher & David Hankins
- Highfill elected to have 12-inch lines along Hwy 264 & 12, and no smaller than a 6-inch line throughout the town to accommodate for future growth. A total of 51 fire hydrants were also placed throughout the town.



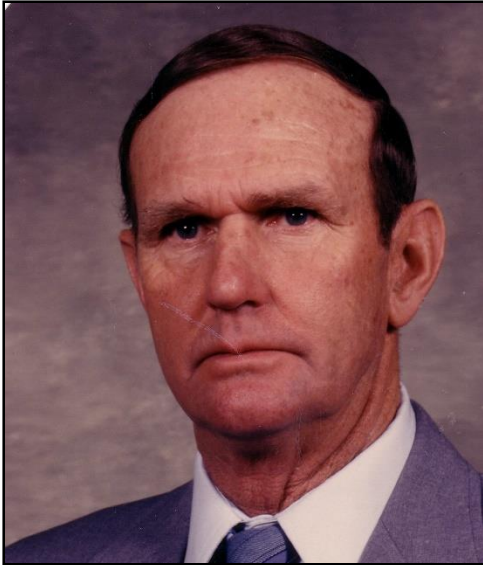
Highfill Mayors 1958-2004



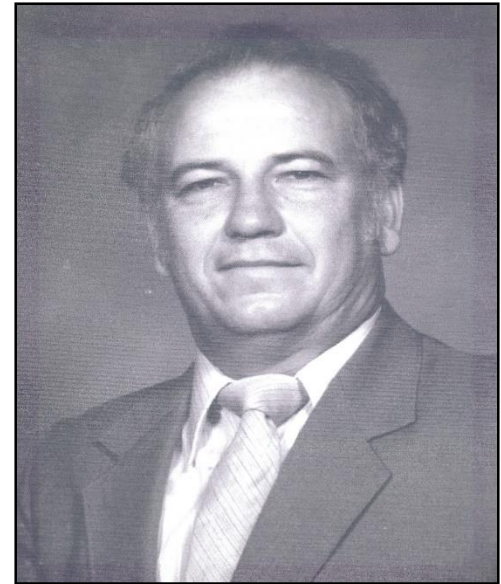
- Barney Douglas
1958-1970
- Buster Sullivan
1970-1986



Highfill Mayors



- Loy Sullivan
1987-1990
- Jerry Harwell
1991-1998



Highfill Mayors



- Mark Hutcheson
1999
- Keven Varner
1999-2000
(not pictured)
- Scott Elliott
2000-2004



Highfill Recorder / Treasurers

- Alva Jenkins 1958-1969
- Jack Lawson 1970-1972
- Bruce Holland 1973-1974
- Clifford Blankenship 1975-1977
- Miriam Blankenship 1977-1988
- Sue Sullivan 1989-1990
- Charlotte Harwell 1991-1996
- Pam Harwell 1997-1999
- Cassie Elliott 1999-2004

Bibliography

- History of Benton County 1836-1936, by J. Dickson Black 1975
- Railroads of Northwest Arkansas, by Robert J. Winn 1986
- University of Arkansas Community Design Center, Interim Planning Report Fall 2001
- Records of the Benton County Circuit Clerk
- Records of the Highfill Methodist Church
- Records of the Highfill First Baptist Church
- Records of the Town of Highfill
- Records of the Benton County 911 Office
- Plat Book of Benton County, Arkansas, E.C. Hood & Assistants, 1903
- A Brief History of Hoover-Highfill, by Margaret Cowden Shields
- Photos courtesy of Katina Fredrick, Sue Sullivan, Inez Long, Cassie Elliott, Engineering Design Associates, Terry Shields, Jimmy Hendrix, Elsie Insko (deceased), Jerry Harwell, Mark Hutcheson, Ida Jean Bryant

HIGHFILL



“It’s My Town”

Logo and slogan initiated in 2002